

AN·TRAX IT

HOME

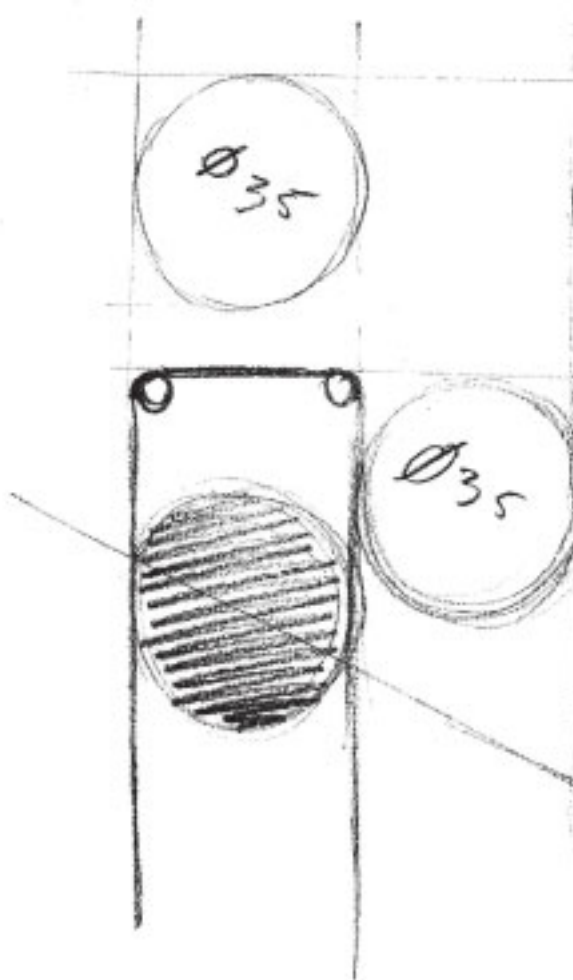
A_35



A_35

Radiatore in acciaio al carbonio caratterizzato da elementi tubolari da 35 mm di diametro.

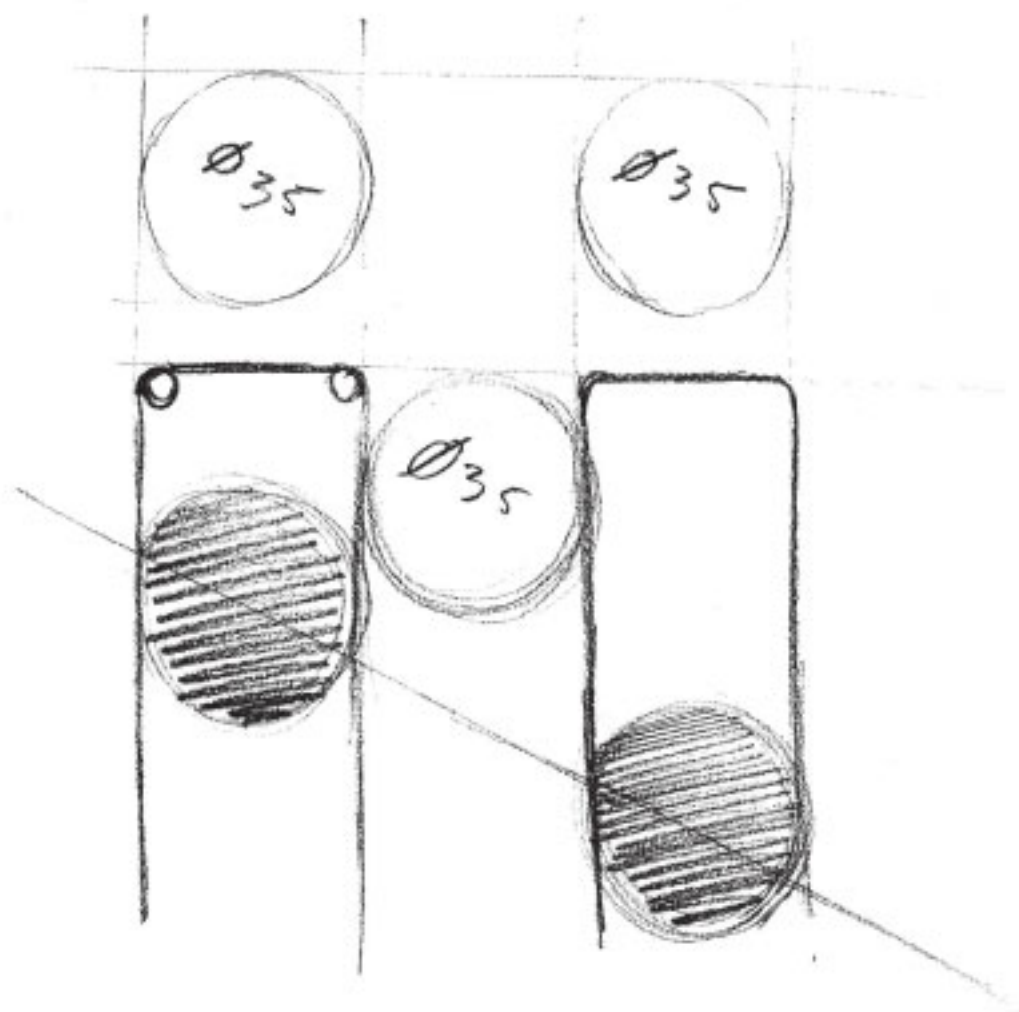
Disponibile in diverse dimensioni e oltre 200 varianti cromatiche.





Home / AV35d
60 x 77.8 cm
WATT ΔT 50° [1003]
COLOR : BRAG

INFORMAZIONI TECNICHE / TECHNICAL DETAILS / DONNÉES
TECHNIQUES / TECNISCHE DATEN / INFORMACIONES TÉCNICAS
PAGE 271

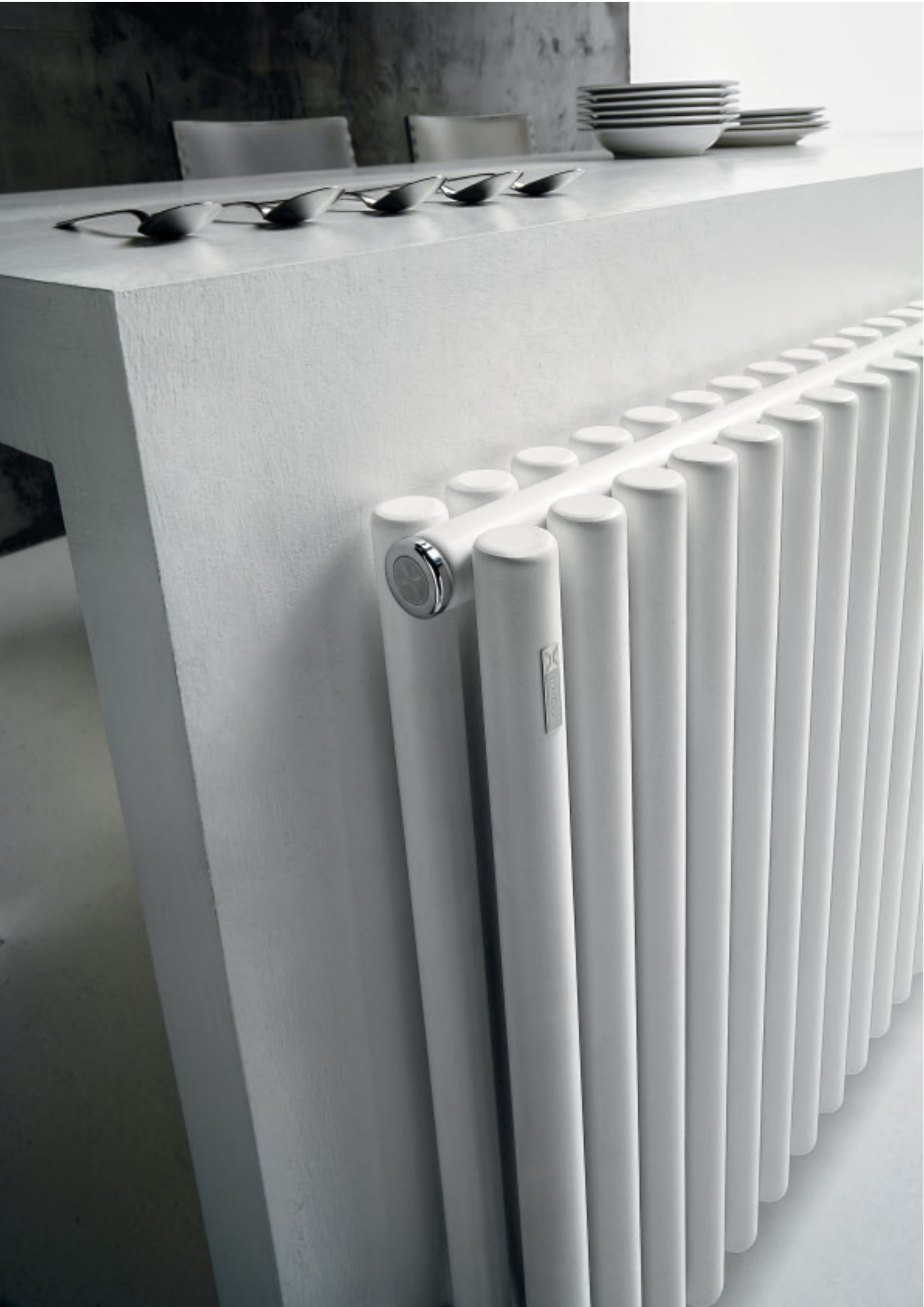


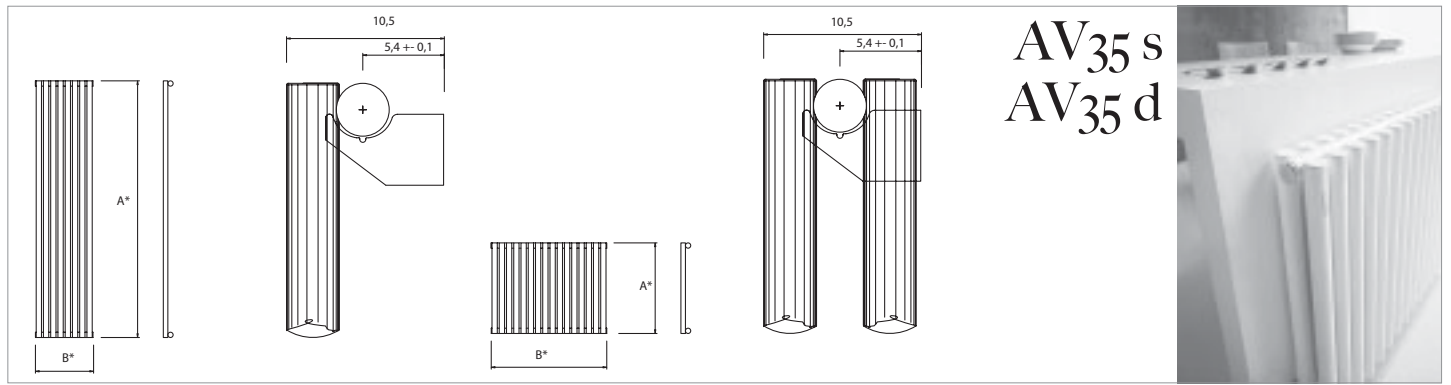
Radiator made of tubular,
carbon steel elements
(diameter 35 mm).
Comes in various sizes
and in more than
200 colours.

Heizkörper aus
Kohlenstoffstahl, bestehend
aus Rundrohren mit einem
Durchmesser von 35 mm.
In verschiedenen Größen und
über 200 Farbtönen
erhältlich.

Radiateur en acier au carbone
caractérisé par les éléments
tubulaires de 35 mm de
diamètre.
Disponible en différentes
dimensions et en plus de 200
variantes chromatiques.

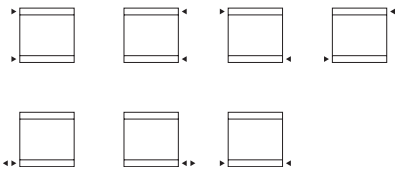
Radiador en acero al
carbono caracterizado por
elementos tubulares de 35
de diámetro.
Se encuentra disponible en
diversos tamaños y más de
200 variantes cromáticas.



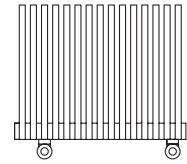


AV35 s
AV35 d

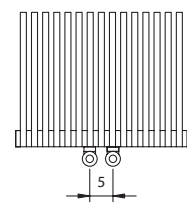
[X] attacco standard
standard connection
raccord standard
standard Anschluss
conexión estándar



[B] attacco speciale
special connection
raccord spéciale
speziell Anschluss
conexión especial



[B5] attacco interasse 5 cm
pipe centres 5 cm
raccords 5 cm
5 cm Achsabstand Anschluss
conexión entre ejes: 5 cm.




P* 296

AV35s				
A*	L*	min. el.	max el.	
60	0.521	7	20	
150	1.244	7	16	
160	1.325	7	16	
170	1.405	7	16	
180	1.485	7	16	
190	1.566	7	16	
200	1.646	7	16	
220	1.807	7	16	

AV35d				
A*	L*	min. el.	max el.	
60	003	7	20	

A* = altezza / height / hauteur / Höhe / alto B* = larghezza / width / longueur / Breite / ancho P* = pagina / page / page / Seite / página
L* = contenuto acqua / content / volume / Inhalt / volumen

<p>Kcal = Watt x 0,860 BTU = Watt x 3,413</p> <p>Watt Δt 60° = Watt Δt 50° x 1,261 Watt Δt 40° = Watt Δt 50° x 0,753 Watt Δt 30° = Watt Δt 50° x 0,522 Watt Δt 20° = Watt Δt 50° x 0,312</p> <p>p max = 10.0 bar</p>	<p>Colori/ colours / couleurs / Farbe / colores</p> <p>[BIAN] B standard T + 10% S + 20% S + 20%</p> <p>[RAL] RAL non inclusi in tabella special Ral colours couleurs Ral spéciales RAL Farbe nicht in der Tabelle inbegriffen colores RAL especiales</p>	<p>Ulteriori dettagli Further details Ultérieures détails Weitere Einzelheiten Otros detalles</p>  <p>P* 294</p>
--	---	---

AV35s			Watt Δt 50°							
No. el.	A* B*	I*	60	150	160	170	180	190	200	220
7	34,4	43,4	276	635	654	691	728	765	803	877
8	39,2	48,2	316	725	747	790	832	875	917	1.003
9	44,0	53,0	355	816	840	888	936	984	1.032	1.128
10	48,8	57,8	395	906	934	987	1.040	1.094	1.147	1.253
11	53,6	62,6	434	997	1.027	1.086	1.144	1.203	1.261	1.379
12	58,4	67,4	474	1.088	1.121	1.184	1.248	1.312	1.376	1.504
13	63,2	72,2	513	1.178	1.214	1.283	1.352	1.422	1.491	1.629
14	68,0	77,0	553	1.269	1.307	1.382	1.456	1.531	1.605	1.755
15	72,8	81,8	592	1.360	1.401	1.481	1.560	1.640	1.720	1.880
16	77,6	86,6	632	1.450	1.494	1.579	1.664	1.750	1.835	2.005
17	82,4	91,4	671							
18	87,2	96,2	711							
19	92,0	101,0	750							
20	96,8	105,8	790							

AV35d
60
439
502
564
627
690
752
815
878
940
1.003
1.066
1.128
1.191
1.254

I*		56 cm	146 cm	156 cm	166 cm	176 cm	186 cm	196 cm	216 cm
----	---	-------	--------	--------	--------	--------	--------	--------	--------

56 cm

