

AN·TRAX IT

HOME

VISION



Vision

Radiatore in acciaio al carbonio costituito da elementi tubolari dal diametro di 13 mm o 25 mm e dotato di un comodo e pratico specchio.

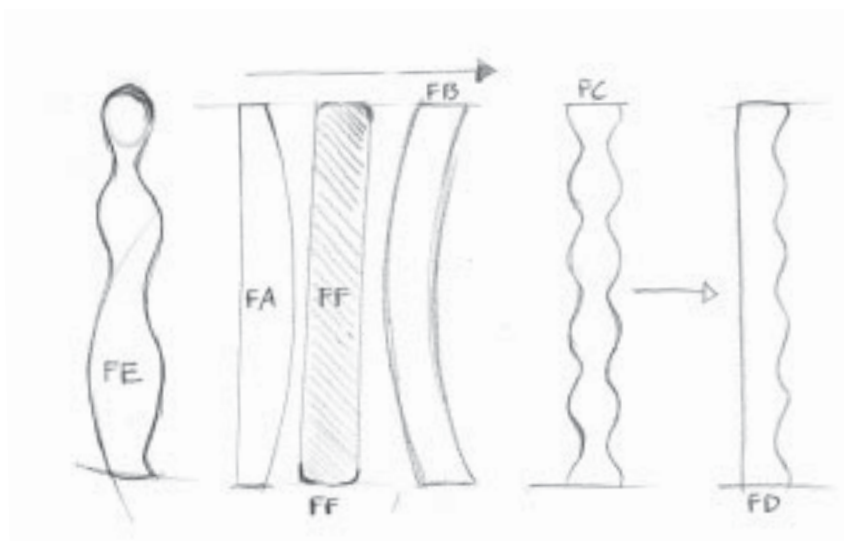
Disponibile in diverse dimensioni e oltre 200 varianti cromatiche. Lo specchio può essere richiesto in 6 forme differenti.

Radiator made of tubular, carbon steel elements (diameter 13 mm or 25 mm) and with a practical, convenient mirror. Comes in various sizes and in more than 200 colours. The mirror comes in 6 different shapes.

Radiateur en acier au carbone constitué d'éléments tubulaires de 13 mm de diamètre ou de 25 mm et doté d'un grand miroir pratique. Disponible en différentes dimensions et en plus de 200 variantes chromatiques. Le miroir peut être demandé en 6 formes différentes.

Heizkörper aus Kohlenstoffstahl, bestehend aus Rundrohren mit einem Durchmesser von 13 mm oder 25 mm. Ausgestattet mit einem praktischen Spiegel. In verschiedenen Größen und über 200 Farbtönen erhältlich. Der Spiegel ist in 6 verschiedenen Formen verfügbar.

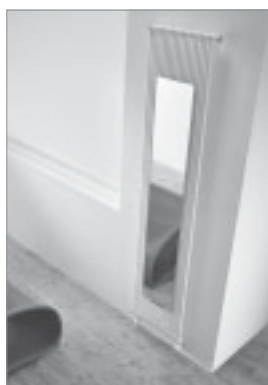
Radiator en acero al carbono formado por elementos tubulares de 13 o 25 mm de diámetro y que dispone de cómodo y práctico espejo. Se encuentra disponible en diversos tamaños y más de 200 variantes cromáticas. El espejo se puede solicitar en 6 formas distintas.



Home / VISION
200 x 44 cm
WATT ΔT 50° [1040]
COLOR : BIAN

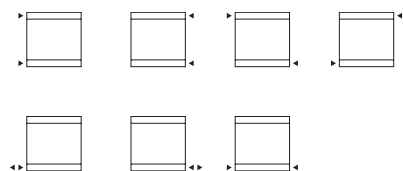
INFORMAZIONI TECNICHE / TECHNICAL DETAILS / DONNÉES
TECHNIQUES / TECHNISCHE DATEN / INFORMACIONES TÉCNICAS
PAGE 228



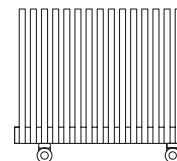


Vision

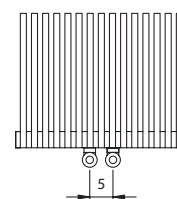
[X] attacco standard
standard connection
raccord standard
standard Anschluss
conexión estándar



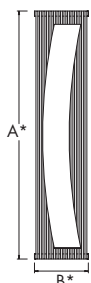
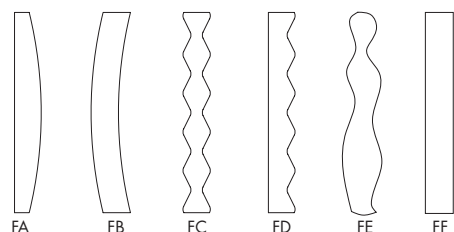
[B] attacco speciale
special connection
raccord spéciale
speziell Anschluss
conexión especial



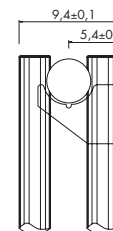
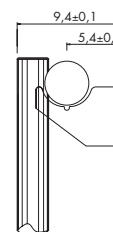
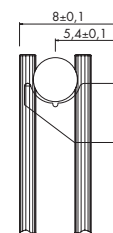
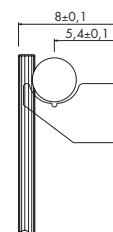
[B5] attacco interasse 5 cm
pipe centres 5 cm
raccords 5 cm
5 cm Achsabstand Anschluss
conexión entre ejes: 5 cm.



P* 296



A* cm	in	B* cm	in	I* cm	in	I* cm	in	art*	BTU Δt 50°	watt Δt 50°
Vision 13 S										
170.0	66.9	44.0	17.3	53.0	20.9	166.0	65.4	VS13000S170018	3 055	896
170.0	66.9	51.2	20.2	60.2	23.7	166.0	65.4	VS13000S170021	3 567	1 046
170.0	66.9	58.4	23.0	67.4	26.5	166.0	65.4	VS13000S170024	4 075	1 195
170.0	66.9	65.6	25.8	74.6	29.4	166.0	65.4	VS13000S170027	4 586	1 345
200.0	78.7	44.0	17.3	53.0	20.9	196.0	77.2	VS13000S200018	3 546	1 040
200.0	78.7	51.2	20.2	60.2	23.7	196.0	77.2	VS13000S200021	4 140	1 214
200.0	78.7	58.4	23.0	67.4	26.5	196.0	77.2	VS13000S200024	4 730	1 387
200.0	78.7	65.6	25.8	74.6	29.4	196.0	77.2	VS13000S200027	5 323	1 561
Vision 13 D										
170.0	66.9	44.0	17.3	53.0	20.9	166.0	65.4	VS13000D170018	4 586	1 345
170.0	66.9	51.2	20.2	60.2	23.7	166.0	65.4	VS13000D170021	5 350	1 569
170.0	66.9	58.4	23.0	67.4	26.5	166.0	65.4	VS13000D170024	6 114	1 793
170.0	66.9	65.6	25.8	74.6	29.4	166.0	65.4	VS13000D170027	6 878	2 017
200.0	78.7	44.0	17.3	53.0	20.9	196.0	77.2	VS13000D200018	5 309	1 557
200.0	78.7	51.2	20.2	60.2	23.7	196.0	77.2	VS13000D200021	6 193	1 816
200.0	78.7	58.4	23.0	67.4	26.5	196.0	77.2	VS13000D200024	7 079	2 076
200.0	78.7	65.6	25.8	74.6	29.4	196.0	77.2	VS13000D200027	7 962	2 335
Vision 25 S										
170.0	66.9	44.0	17.3	53.0	20.9	166.0	65.4	VS25000S170012	3 110	912
170.0	66.9	51.2	20.2	60.2	23.7	166.0	65.4	VS25000S170014	3 628	1 064
170.0	66.9	58.4	23.0	67.4	26.5	166.0	65.4	VS25000S170016	4 147	1 216
170.0	66.9	65.6	25.8	74.6	29.4	166.0	65.4	VS25000S170018	4 665	1 368
200.0	78.7	44.0	17.3	53.0	20.9	196.0	77.2	VS25000S200012	3 615	1 060
200.0	78.7	51.2	20.2	60.2	23.7	196.0	77.2	VS25000S200014	4 215	1 236
200.0	78.7	58.4	23.0	67.4	26.5	196.0	77.2	VS25000S200016	4 818	1 413
200.0	78.7	65.6	25.8	74.6	29.4	196.0	77.2	VS25000S200018	5 418	1 589
Vision 25 D										
170.0	66.9	44.0	17.3	53.0	20.9	166.0	65.4	VS25000D170012	4 794	1 406
170.0	66.9	51.2	20.2	60.2	23.7	166.0	65.4	VS25000D170014	5 596	1 641
170.0	66.9	58.4	23.0	67.4	26.5	166.0	65.4	VS25000D170016	6 394	1 875
170.0	66.9	65.6	25.8	74.6	29.4	166.0	65.4	VS25000D170018	7 195	2 110
200.0	78.7	44.0	17.3	53.0	20.9	196.0	77.2	VS25000D200012	5 497	1 612
200.0	78.7	51.2	20.2	60.2	23.7	196.0	77.2	VS25000D200014	6 411	1 880
200.0	78.7	58.4	23.0	67.4	26.5	196.0	77.2	VS25000D200016	7 328	2 149
200.0	78.7	65.6	25.8	74.6	29.4	196.0	77.2	VS25000D200018	8 242	2 417



A* = altezza / height / hauteur / Höhe / alto B* = larghezza / width / longueur / Breite / ancho art* = articolo / model / modèle / Artikel / artículo P* = pagina / page / page / Seite / página
I* = interasse / pipe centres / distance entre depart et retour / Achsabstand / distancia entre las conexiones



Ulteriori dettagli
Further details
Ultérieures détails
Weitere Einzelheiten
Otros detalles

P* 294

Colori / colours / couleurs / Farbe / colores

[BIAN] B standard
T + 10%
S + 20%
[RAL] S + 20%
RAL non inclusi in tabella
special Ral colours
couleurs Ral spéciales
RAL Farbe nicht in der Tabelle inbegriffen
colores RAL especiales

Kcal = Watt x 0,860
BTU = Watt x 3,413

Watt Δt 60° = Watt Δt 50° x 1,259
Watt Δt 40° = Watt Δt 50° x 0,754
Watt Δt 30° = Watt Δt 50° x 0,525
Watt Δt 20° = Watt Δt 50° x 0,314

p max = 10.0 bar

